

Viatrex live blood analysis observations, study and/or research on covid Background on darkfield technology, blood observations and follow-up on subjects

The following information is for education purposes only. It is part of ongoing observations, research and/or study on covid; those who received an mRNA covid shot and those affected by potential shedding and /or contact with (an) injected individual(s). The information deals with pre and post live blood analysis (LBA) observations of subjects who received at least 1 mRNA covid shot, after receiving 5 oral sprays of a proprietary brand specific product, a second LBA is performed. Comparative observations are provided. The subject subsequently follows a protocol with observations after the protocol and for some months later. Some observations of those who have not received an mRNA Covid shot, however exhibit a LBA picture with potential signs of spike proteins and/or graphene is noted. This information is provided freely and without prejudice. Due to the present environment in the region where the practitioner doing the observations is located, it was decided to keep their ID and location private. Viatrex is open to providing similar support to other live blood analysis operators and/or other practitioners with objective technology(ies) to identify and observe the covid status and/or status of those exposure to covid or shedding. This document and all pertaining to what is described in it is protected by international copyrights and trademark(s).

Overview

For some, the novel Covid mRNA injections has created some challenges. It appears to be very difficult to fully know everything that goes into an mRNA covid vial, which makes finding solutions for those with adverse reactions a challenge. To “see” what is going on with a person, for the purpose of this work we turned in part to darkfield as it shows what is happening in their blood at that moment. The one used for the lead practitioner is a Darkfield microscope, with a 100X oil objective and 150 watt light.

The lead practitioner doing the live blood analysis is a naturopath, with other certifications. They have been doing Live Blood Analysis (LBA) since 1996, with approximately 40,000 consultations. They have studied with different schools on the subject, course include ones in San Francisco, Atlanta, Montreal and England, each having a different vision. Some of their most intense studies are according to Dr Enderlein’s theory.

These observations are for those who came due to health concerns, adverse reaction or as part of their usual health evaluation. All had opted to receive an mRNA covid injection of their own free will, from another party. It was observed in this population that regardless of the timeline since receiving the mRNA covid injection(s) be it a day or years later, the blood picture is similar.

Practitioner’s Live Blood Analysis Observations

I have been seeing bizarre “symplasts” in the blood in subjects who received the mRNA covid shots. Symplasts are an accumulation of toxins, showing in the blood with different forms, shapes and colors, being bright or like a shadow. Their shapes and forms are rather interesting!

*I find the shapes and forms are quite different from what I have seen before.
The spike proteins will show as “spicules”, showing an inflammatory state.*

Graphene will show as lines and often circles, like an oil blob.

Overall live blood observations of those who received an mRNA covid shot show up as having smaller red blood cells, they are deformed, have less oxygen. The cells congest into various pack formations. There is always more debris, and as mentioned above, some things I have not seen before.

In light of these potential mRNA covid challenges, we initiated product development and a study with darkfield microscopy (LBA) as one of the validating tools to consider present status and potential clinical options. It is important in this study and product development to consider options which address the causal aspects of the insult. That is, what and where is the splinter causing the infection and pain?

In mainstream and integrative medicine there are categories known as Low Dose Allergy therapy (allergens) (LDA) & Low Dose Immune Therapy (pathogens) (LDI). These avenues include, where possible, isolating the causing allergen(s) or immune compromising pathogen(s), and preparing a low through very, very low dose substance from them to administer to the subject. Like allergy shots. In the integrative world, these categories also exist, in the HPUS the classes are known as Allersodes (allergens), Nosodes (pathogens, parasites, bugs, molds, etc), and Isodes (any substance which causes a health challenge). In each case the challenging substance is diluted or potentized to a potency which is said to stimulate the body's natural systems to recognize the insulting substance and potentially produce antibodies and/or activate the elimination systems to expel it. Using these categories provides the opportunity to make a remedy from a substance with known and unknown content. The end product would theoretically cover the full scope of what is in the vial.

We have seen studies where different preparation methods were used. Depending on the one chosen, clinical results were vastly different. To achieve the desired outcome a proprietary preparation method and concept were used. It was observed the nature of the mRNA technology presented a different challenge from the usual more natural challenges. Knowing that its effects are at work 24/7 were also part of the considerations and created a departure from traditional protocols and product development. The rules of the game had changed, so we needed to change approaches and solutions.

For this study, using the above noted proprietary methods and concepts, brand specific liquid preparations were prepared for each of 3 leading mRNA Covid brands.

What clinical outcomes are we seeing from this approach?

All subjects have confirmed receiving atleast one mRNA covid injection

The protocol consists of

- taking the subject's initial blood drop sample and preparing to be viewed under the microscope.
- determining the subject's most recent mRNA brand,
- subject takes 5 oral sprays of the corresponding proprietary product
- 15 minutes later, a new blood sample is taken and prepared for the microscope

Follow standard darkfield microscope protocols to observe both blood samples, take pictures and notes.

The practitioner noted:

“Fifteen minutes later, I retake a drop of blood.

In all cases, the red blood cells have taken back much of their healthier shape and size, more oxygen is present, they are freer flowing with much less debris. Their sample of blood always looks clean!

There is a protocol the clients are put on.

With every client who comes back for a follow-up, there are no symplasts to be seen, none every time! Amazing!!! Their energy level has also improved.

When I see evidence of spike proteins or graphene, this is often for people who never received an mRNA covid shot, I give them Viatrexx-Graph, a product from Viatrexx, and strangely enough, their blood is clean after fifteen minutes!

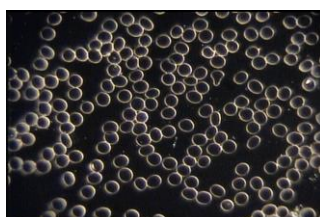
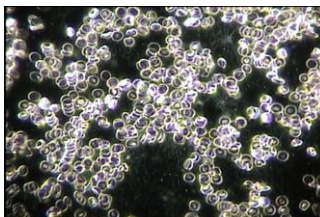
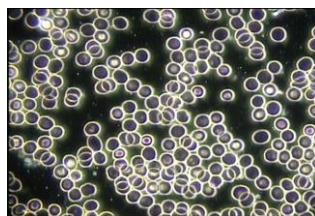
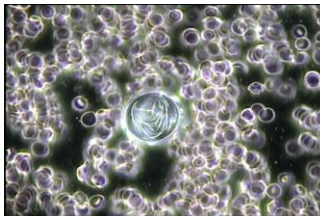
*To be honest, when Stephen Emond (owner of Viatrexx) contacted me to do these observations, I had told him that I had never seen a change in the blood within 15 minutes and was very skeptical. **To see the reversal in 100% of the people is stunning, even more impressive, the effects hold.** People are getting their lives back.*

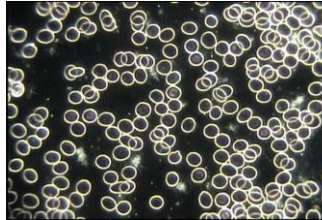
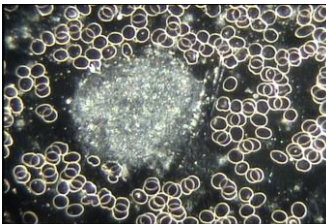
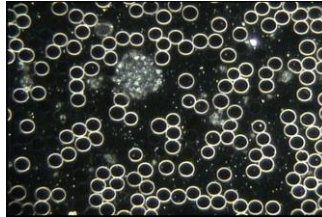
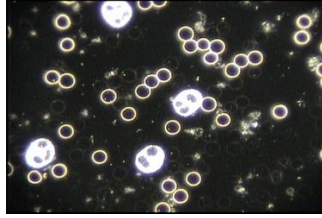
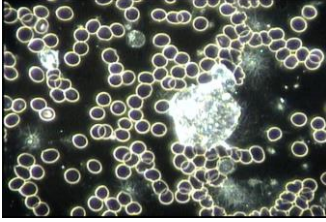
*Regards
N.D. K.in.”*

The following pictures are from some of the subjects
Each row is an individual, these pictures are from 5 different people

Blood sampled **upon arrival**

5 sprays of the proprietary brand specific product of the most recent mRNA covid jab, pic taken **15 minutes later**





In all cases the “**upon arrival**” blood sample (left column) demonstrate:
Smaller, deformed and less oxygenated red blood cells
They are clustered together and have less movement
The immune response is compromised either working harder than usual or inefficient
The quantity of debris is high, many historically recognized substances
In some cases, there are new debris formations, not part of past historical observations

15 minutes post the oral compounded product (right column):
The red blood cells are getting back to their original size and shape, with more oxygen,
They are expressing a healthier disposition and formation
Immune response is stabilizing
Debris is clearing

The elimination group

What is suggested in the subject take home protocol is

- the low dose proprietary product designed for the last mRNA covid injection brand they received.

This type of preparation often stimulates the body to respond in a few potential ways

- 1- identify undesirable elements
 - a. provide an immune response
 - b. initiate an elimination of the undesirable element(s)
- 2- body wants to be well and will strive to this end

to support them and the elimination process

If left on their own with just the proprietary product, subjects often had strong elimination episodes which were uncomfortable. The following series of products were added to the protocol.

To support the process and organs of elimination we designed a general systemic detox called Viatrexx Systemic Dx.

The data on the synthetic mRNA points to it remaining active, encouraging new versions of itself to be created with cell apoptosis, and being a potential perpetuator of the challenges. There are numerous studies which describe enzymes like Natto Kinase, Lumbro Kinase and others as shredding the mRNA. This we sourced from local suppliers.

To assist with the elimination process a chelating agent such as Shilajit, humic and/or fulvic acid or similar is used to bind elements which are being released by the tissues, potentially grab the shredded mRNA and support the detoxification process. We sourced this product from local suppliers.

For the immune system

Many subjects have reported a recurrence of past conditions they had years or decades ago and thought it was dealt with, such as herpes, mono, papilloma, CMV, AIDS, cancers and others. There is a suggestion that whatever is bound to the mRNA is what the immune system puts its attention on, in this case Covid and the possibility that other innate and/or acquired immune responses start to lessen.

To support the immune system a product made from the healthy immune system glands, tissues and other supporting elements was developed. Some of the components are said to support the repopulation of the anti-viral and anti-bacterial cytokines. Its goal is to nourish and regenerate both the innate and acquire immune systems. It's called Viatrexx-Immunexx

Many have expressed concern that the DNA is being influenced in an undesirable fashion. Some consider the DNA to be a copy of the previous one. Considering this, a product was developed based on historically healthy human RNA and DNA strands from a few decades ago. (Viatrexx-R-DNA.)

The above products represent the base, with a protocol which runs 2-3 months. They complement all other products.

Some of the challenges subjects express include:

- respiratory where TH2 is upregulated, and TH1 is suppressed, (Viatrexx-BreatheXX)
- Kidney, heart, pancreas concerns, all 3 of these organs have a common relationship (Viatrexx-Kidneysomes)
- Brain and neurological issues (Viatrexx-Brain-Neural oral or nasal)
- Low energy, can be from a metabolism/Krebs perspective (Viatrexx-Krebsexx) or an endocrine perspective (Viatrexx-ThyreXX), potential link to sympathetic / parasympathetic / vagal status

For each of these a 2–3-month protocol is suggested, except the brand specific product, which is 1 bottle (~45 days). They may be complemented with nutraceuticals and some of the options industry is offering. These LBA observations were similar with some individuals who had fluid exchange with inoculated and/or blood/serum transfusions. The above protocols remain similar.

What about shedding challenges those who weren't inoculated

For these 2 products were designed one from a graphene viewpoint (Viatrexx-Graph) and the other from a CV19 perspective (Viatrexx-CV19). They are complemented with the systemic detox, immune and chelating products. These work well for long-covid.

The practitioner noted: When I see evidence of spike proteins or graphene, this is often for people who never received an mRNA covid shot, I give them Viatrexx-Graph, a product from Viatrexx, and strangely enough, their blood is clean after fifteen minutes!

These observations, research and Viatrexx product developments are here to advance causal options and support the community. There is some amazing work and insights done by wonderful individuals and groups. The Viatrexx products are designed to be adaptogenic and may work in concert with other products.

*To be honest, when Stephen Emond (owner of Viatrexx) contacted me to do these observations, I had told him that I had never seen a change in the blood within 15 minutes and was very skeptical. **To see the reversal in 100% of the people is stunning, even more impressive, the effects hold.** People are getting their lives back.*

The research and clinical outcomes are very positive. If you would like more information, feel free to reach out.

Stephen Emond, CEO
Viatrexx