



THE BRIDGE

Linking Practitioners of German Biological Medicine

Volume 14, Issue #2, February 2018

Thursday, 22 February 2018

Dear Colleagues, Friends and Supporters of OIRF,

➤ Welcome to Volume 14, Issue #2 of "The Bridge" newsletter!

Welcome to this second Issue of "The Bridge" for 2018. In these pages you will find another insightful article from **Simon Yu, MD** entitled "*Lyme and Post-Lyme Syndrome: Forensic Case Study from New York*". Utilizing the Acupuncture Meridian Assessment (AMA) he developed based on standard EAV methods, Dr. Yu summarizes his perspective on current diagnostic and treatment methods for Lyme Disease.

Also included in this Issue is a short article by **Kiril Sokoloff**, Founder and Chairman of 13D Research about his experiences using the amazing **FIT 915** from Medical Electronics. Next month's Issue #3 will feature another translation article from one of the German Journals that Carolyn regularly monitors. We're also seeking permission to reprint some articles by **Jürgen Aschoff, MD** on **Geobiology**.

➤ Please see the 2018 Events Calendar on Page 22 of this Issue and also on the [Events Page](#) of our website where you will find the current conference listings. Watch for announcements of several other conferences and seminars where you will find OIRF in an education or exhibit booth. Events for 2018 are currently being scheduled and we look forward to participating in many of them!

I've updated the event/seminar information as closely as possible and included the new 2018 dates for **Dr. Simon Yu's AMA training in St. Louis, MO** and the **English MORA Power Week training** at Med-Tronik in Germany.

➤ **Conference Reminder Notices:** (see details Pages 2, 10, 22 and 23 in this Issue):

➤ **AMA** (EAV) hands-on workshop for MD's during April 27-29 and August 24-26, 2018 sponsored by **Dr. Simon Yu** of **Prevention and Healing** in St. Louis, Missouri.

Note: Dr. Yu's AMA training and boot camp session has recently been opened to practitioners with alternate certification. It focuses on EAV-type testing for parasites and dental problems.

➤ **Neural Therapy and Integrative Biological Medicine:** Sponsored and organized by **Michael I. Gurevich, MD**. Program includes: Advanced Neural Therapy, New injection techniques, Holistic Biological Dentistry, Introduction to vital blood analysis and the Basics of European Phytotherapy. Features **Ralf Oettmeier, MD and Joseph Vizkelety, MD, DDS**. Jamaica, New York March 16-18, 2018. Also **Neural Therapy Workshops:** Oct. 5-7, 2018 Glen Head, New York. Call 516-674-9489 or email gurevichmd@gmail.com for further details and registration!

➤ **English MORA Power Week training** AT Med-Tronik in Friesenheim, Germany, September 10-15, 2018. Contact OIRF or Med-Tronik for registration and details.

🔄 The organizers of the Baden-Baden **Medizinische Woche** have announced the dates of their annual congress, but will not publish their active lecture schedule until May (later and later every year). To take advantage of their schedule and lecture series, following here are the dates of our **OIRF Germany Tour #45:**

- Medicine Week: October 31 through November 4, 2018
- OIRF Germany Tour #45: October 30 through November 5, 2018

This year, our theme or focus of interest will be **Complementary Diagnostic and Assessment Methods**. We are looking at those methods which are "real" and individualized as well as explanations about the effectiveness of causal diagnostics versus the now popular "global" diagnostics based on statistical analysis.

We have invited **Dietrich Klinghardt, MD** to be our **Keynote Speaker** for this 45th Biological Medicine Group Tour to Germany. Dr. Klinghardt is a highly respected and well received participant of the annual Medicine Week Congress program, and we felt he would be able to speak (in English of course) in greater detail and without the North American constraints during our private lecture schedule. As well as our keynote speaker Dr. Klinghardt, here are some of the anticipated special features for Tour #45!

- Clinic Lecture: Integrative Cancer and Lyme Disease specialist – Dr. Friedrich Douwes*
- Clinic Lecture: Biological Medicine specialists using multiple modalities – Dr. Uwe Reuter* and Dr. Ralf Oettmeier*
- Clinic Visit – A private Biological Medicine Clinic in Frankfurt, Germany
- Advanced Medical Systems (AMS): Pulsed Electromagnetic Field Therapy – Dr. Frank Beck*
- Pharmacy Lecture: RNA Therapy – Dr. Georg Stommel*
- Alfa Thermodiagnostics – Dr. Dan Beilin
- Heart Rate Variability (According to Nilas) – Dr. Jürgen Aschoff
- Photon Resonance Test (According to Schimmel) – Ute Engelhardt, Aina Sylvester-Schimmel
- PsychoSomatic Energetics – Dr. Reimar Banis
- ONDAMED – Dr. Silvia Binder
- Med-Tronik: BioResonance Therapy and Diagnostics – Nuno Ruivo and Peter Mahr
- Evening lectures, training sessions and discussions with attending OIRF directors and advisors

* **Note:** Some of the above lectures are sponsored English language lectures that are part of the Medicine Week Congress program itself. The OIRF group has been invited to attend.

➡ Included in this issue once again is a brief report on some of the interesting “toys” and devices discovered during our recent Biological Medicine group tour (#44) program to Germany. We’re still awaiting printed and detailed information on many of these devices and will get that info out to you as quickly as possible – in other words the info here is a preview with introductory pricing. You can follow our daily activities, adventures and travels during that tour through the beautiful Black Forest of Germany at our [Itinerary 2017](#) link. Everything ran according to our schedule (well, except for the one day that my alarm clock didn’t function . . .).

➡ OIRF has begun the process of updating and revising our website – this is a big project at the end of each year to make sure we are up to date and that the site is running smoothly. We ask your patience should you experience any glitches or disruptions – and if you see any little slipups or mistakes please let us know so that we can get them all fixed up.

➡ Note that OIRF is now able to accept your credit card payment directly in either USA or Canadian dollars and all pricing has been adjusted to reflect both currencies. Thank you for your continued business and support.

➡ I invite all of you to maintain your email or print subscription to “The Bridge” newsletter. All 2018 issues of “The Bridge” will be sent to you by email and then published on our website. **Access is open to all.** Follow this link to get your PDF print copy of “The Bridge” Volume 14, Issue #1.

Further new and cutting-edge articles from our prestigious Board of Advisors and Directors as well as more of Carolyn’s translations of articles from current German journals are underway for future Volume #14 issues of this newsletter. Issue #2 for 2018 should arrive in your Inbox during mid-February and will feature a variety of practical and educational articles.



Dr. Yu’s AMA Training Sessions in St. Louis Missouri



Lectures and
Practical
applications



The great Dr. Doug Cook →



*An exclusive **article for OIRF Supporters**, published February 2018
by Occidental Institute Research Foundation . . .*

Lyme and Post-Lyme Syndrome: Forensic Case Study from New York

By Simon Yu, MD

© Copyright 2018, Dr. Simon Yu, Missouri USA

Who else committed the crime of Post-Lyme? The [Integrative Medicine for the Treatment of the Tick-borne Diseases](#) Conference will be held in Baltimore on April 20-21, 2018, and the Lyme Disease Association of Delmarva invited me give a talk. I told them I do not treat Lyme disease, I am not Lyme-literate, nor specialized in Lyme disease, in tick-borne disease. They may not like what I have to say, and may be asking the wrong person to give a talk.

The Association asked me to give a lecture on parasites in the context of Lyme and Tick-Borne Diseases. I told them I am not a parasitologist, but I have written many articles on parasites based on my military experience. As long as they understand that, I will give a lecture on parasites, but also on hidden dental infections that can mimic Lyme disease.

I had a similar experience with the International Lyme and Associated Diseases Society (ILADS) a few years ago, when a board member inquired about giving a talk at their conference. I told him about my perspective on Lyme disease in my book, [Accidental Cure: Extraordinary Medicine for Extraordinary Patients](#), and in my article, [“Lyme Disease Under the Limelight: Are the Diagnoses Misleading?”](#)

I gave him my book to read and said, if he was still interested, I would give my lecture. I am concerned about over-diagnosis of Lyme disease as a default mode based on clinical diagnosis, with too much focus on aggressive antibiotic approaches. This can be a dead-end treatment plan, especially if it misses other contributing factors. They did not call me back.

There is a clear indication to use antibiotics for acute tick bite incidents with associated classic skin lesion of a bull’s eye red rash and/or arthralgia and flu-like symptoms after a tick bite. What happens when the symptoms become progressive, and develop into even

more weird symptoms after antibiotics? Using more powerful antibiotics may not solve the problem, which is now called Post-Treatment Lyme Disease Syndrome (PTLDS) by the U.S. Centers for Disease Control (CDC), or Complex Lyme Disease.

If *Borellia burgdorferi* spirochete (Lyme) and co-infections are treated with aggressive IV antibiotics and the patient still has symptoms of Lyme, can we solve the mystery of Post-Lyme Syndrome by applying the analogy of forensic science? Let us investigate what happened after aggressively eliminating *Borellia* spirochete infection. In other words, who else committed the Crime?

Forensic science is the application of science to criminal and civil laws, mainly during criminal investigation, as governed by the legal standards of **admissible evidence**. Assuming the *Borrelia* is dead, mutated, transformed, or hiding as a cyst form; Lyme specialists look for co-infections as a culprit for persistent post-antibiotic Lyme symptoms, like Babesia, Bartonella, Ehrlichia, Anaplasmosis, Mycoplasma, and Rocky Mountain Spotted Fever (RMSF).

Let me introduce 60 year old Sharon, a college professor from upstate New York, a classic post-Lyme syndrome patient as a forensic case study. The patient had a tick bite in 2013 and was on doxycycline and initially felt better. In 2014, she was officially told she had seronegative Lyme disease. In 2016, she experienced vision loss with white clouding on her vision, but the eye exam was normal. Since then, she experienced right eye pain, pins-and-needles-like pain, and has seen 13 physicians. She needs to use an eye patch to read, but her eye exam has been completely normal per numerous ophthalmologists.

A Spinal tap was done in January 2017 and was positive for *Borrelia*. She was officially diagnosed with CNS neurologic Lyme disease. An infectious disease specialist started her on a 28-day course of IV ceftriaxone and there was no improvement. She was told her Lyme disease was treated, and she now has post-Lyme syndrome. She experienced persistent tingling arms and legs, incontinence, low back pain, fibromyalgia pain all over, severe fatigue, loss of appetite, weight loss and severe insomnia.

The patient went to a Lyme clinic in Arizona and received a 10-week course of IV antibiotics and six weeks of insulin potentiation therapy (IPT), but developed pancreatitis during the course of treatment. Next she had oral surgery in Colorado for four cavitations and replacement of two amalgams, and “crashed” according to her words. She also had a coffee enema, during which she passed “two different kinds of parasites” – the admissible evidence – and came to see me for parasite problems.

Acupuncture meridian assessment (AMA) showed that 8 out of 40 meridians were out of balance. Her gallbladder, allergy/immunology and small intestine meridians were the dominant problems. She was started on parasite meds: ivermectin, pyrantel pamoate, and

praziquantel; followed by anti-fungal meds: fluconazole and itraconazole; and other support therapies.

On her second visit, she reported feeling much better, and all her 40 meridians were balanced. She will be on multiple rounds of alternating parasite/antifungal meds. This is a long process of eliminating several layers of infections – including *Borrelia burgdorferi* and coinfections – with IV antibiotics, dental cavitation (jawbone) infections with oral surgery, and finally, parasites and fungal infections with potent prescribed medications.

It may be premature for me to say she is healing from Post-Lyme Syndrome yet. Time will tell. From the forensic science of who committed the crime, her missing links between Lyme disease and Post-Lyme Syndrome were her dental infections (four jawbone cavitations) and parasites/fungal infections.

It is time to spread knowledge and awareness of [Acupuncture Meridian Assessment \(AMA\)](#), which provides doctors and dentists an additional tool for connecting the dots on missing “forensic evidence” links: such as dental, parasites and fungal problems. It combines a 5000 year old disruptive technology called acupuncture – part of ancient Energy Medicine – with modern digital BioResonance technology. Physicians, dentists and prescribing professionals who would like to learn more about [Acupuncture Meridian Assessment](#) can register for [AMA Training](#), April 27-29 or August 24-26, 2018, in St. Louis.

Keynote speakers at the [Integrative Medicine for the Treatment of Tick-borne Diseases](#) include Neil Nathan, MD, Julie McIntyre, herbalist, Ann Corson, Thomas Moorcroft, DO, Rosalie Greenberg, MD, Kristine Gedroic, MD, Simon Yu, MD and Edward Breitschwerd, DVM. If you are interested in attending the conference, register or contact: delmarvalyme@yahoo.com. Please share this information with Lyme, Post-Lyme, and forensic minded patients, medical professionals, individuals and groups.

Dr. Simon Yu, M.D. is a Board Certified Internist. He practices Internal Medicine with an emphasis on Integrative Medicine to use the best each has to offer. For more articles and information about integrative medicine as well as patient success stories, and Dr. Yu’s revolutionary health book, [Accidental Cure: Extraordinary Medicine for Extraordinary Patients](#) or visit his website at www.PreventionAndHealing.com



Simon Yu, M.D.
Prevention and Healing, Inc.
St. Louis, MO
314-432-7802
www.preventionandhealing.com



Weaving Internal Medicine with Integrative Medicine to Use the Best Each Has to Offer

A reprint article for OIRF Supporters published February 2018
by Occidental Institute Research Foundation . . .

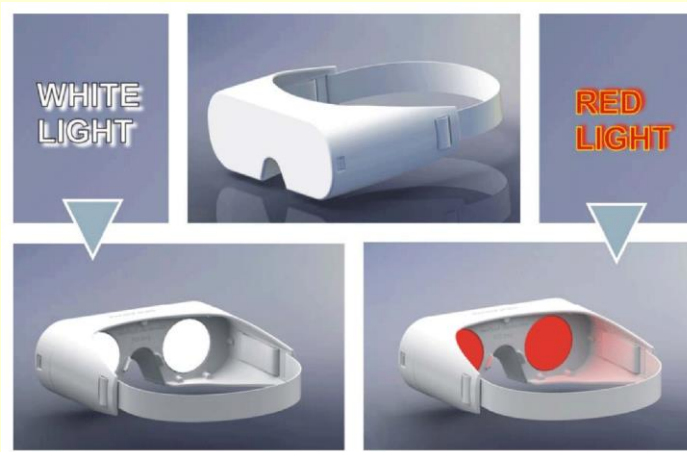
What I Learned This Week

By Kiril Sokoloff
Founder and Chairman, 13D Research LLC

© Copyright 2017, 13D Research, Kiril Sokoloff, June 2017

We are sleeping better than ever before.

While *NuCalm* took us to a higher level than ever before, the new energy eye glasses that **Dr. Michael Galitzer** recommended have enabled us to have 8 hours of uninterrupted sleep, with only one visit to the bathroom at night. The glasses are shown below. We start the day with five minutes of white light, and end the day with five minutes of red light, which **stimulates the creation of melatonin**. Upon reporting this amazing sleep, Dr. Galitzer wrote back as follows: *“This will be so therapeutic for you, as it will further strengthen your visual sense, and then direct energy to your pineal gland and brain!”* (Dr. Galitzer provides us with his *Pineal Stim formula*, which is anti-aging and has an anti-cancer affect. Dr. Galitzer says: *“I have been spending several years looking at cancer energy, cancer memory, and cancer stem cells, and have 100% certainty about the role of the Pineal.”*)



The pineal gland is a pine cone-shaped gland located in the center of the brain, and is the size of a small pea. It resides outside the rest of the brain and is not isolated from the body by the blood-brain barrier, like the rest of the brain. **After the kidneys, the pineal has the most abundant blood supply.** The pineal produces the hormone, melatonin, which helps regulate sleep patterns, menstrual cycles, and sexual development.

Though separate from the brain, the pineal has direct connections to both the brain and the retina. **Throughout time, ancient cultures have referred to the pineal gland as the “third eye”, and felt it was the link between our body and our spiritual environment.** Light that enters the retina—which has direct neurological connections to the pineal gland—has a profound influence on numerous biological functions. Ancient cultures recognized this and developed healing techniques to open these pathways. These include meditation, prayer, color therapy, Tibetan singing bowls, acupuncture, and harmonic tuning forks. **When the pineal ages it calcifies, increasing the incidence of Alzheimer’s disease.** Patients with Alzheimer’s are deficient in melatonin.

We must also add that since we began using the white light in the morning, we have vastly more energy and concentration and our productivity has soared. While it’s too early to be sure, it is possible our eyesight has also improved.

Our mood and health are heavily controlled by hormones. And hormones are controlled by the light which we absorb with our eyes. As the creator of the energy eye glasses, *Dieter Jossner*, writes:

Hormones for our health and wellbeing are endorphins, dopamine and serotonin which are controlled by light. Their existence is the immediate reaction to the absorption of natural light or light with equal physical properties . . . An energy boost with simulated sunlight in the morning has the effect of a sudden impact on our biological system . . .

Red light has successfully been used for a long time in the energetic medicine field. Even in ophthalmology remarkable results are being noticed. This opens new opportunities for cases which up to now were considered to be hopeless.

Lately there are an increased number of news items by amazed ophthalmologists and opticians about mysterious healing results of damaged eyesight where any previous treatment had been unsuccessful . . .

Circulation, metabolism, blood pressure, hormones and a whole range of other important functions are directly or indirectly dependent on the light absorbed by the eyes.

Dr. Galitzer’s wife, *Dr. Janet Hranicky*, is a world-renowned psycho-neuroimmunologist who, for over 30 years, has studied the causes of cancer and the role that stress and attitude play in its development and treatment outcomes.

Dr. Galitzer tells us that cancer only grows at night and that people with cancer don't have enough red in their energy field. Dieter Jossner also created a device that makes "magic water". We drink water irradiated with white light from this device in the morning and a glass irradiated with red light before bedtime.

Dr. Galitzer summarizes as follows: *"Health is energy. It has been said that Energy Medicine is the future of medicine. That future is now."*

Reprinted here with permission. © 13D RESEARCH, 13D.COM, (340) 775-3330 |
PRINT ONCE - DO NOT FORWARD - DO NOT COPY

**Energize water with this high tech miniature unit
at your place of work or while travelling**



Starting the day full of energy

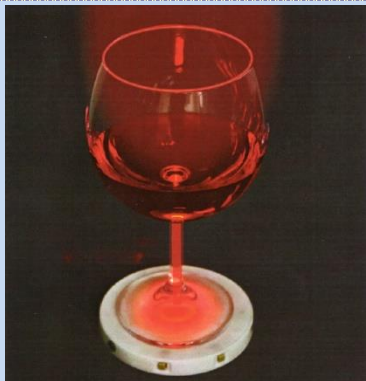
All kinds of healthy teas whether it is herbal tea, green tea or white tea (which is the most beneficial) all develop a significantly better biological effect. This application is also very successful in improving the blood flow. Using a special blood test, dark field microscopy, the positive effect on the red platelets (erythrocytes) can be very graphically displayed.

See full details at www.oirf.com/pdf/UBS_315.pdf



It is important to drink water during the day

There have been many reports about the importance of drinking water. As mentioned on previous pages there are vast differences regarding the water qualities which are available to us. Not everyone is fortunate enough to live next to a natural spring. Very few can afford glacier water. Based on biological evolution humans are made exactly for this type of water. Nature does not know about water pipes or plastic bottles. However, with the **UBS 315** unit it is possible to restructure this biologically lifeless water. Structured water is a special biological power source.



Photons carry information

Photon penetrated water or other liquids carry the bioenergetic information before they are consumed. Bio energetic information can therefore be transferred to oneself without having to swallow anything. This is in particular a great advantage when bitter herbs or similar are involved. Like the ingredients of red wine (OPC) are active all the time while the glass is standing in front of you. Also crystals, or other effective information carriers like plant extracts dissolved in water, show remarkable results when used with the **UBS 315** unit.

Contact OIRF for price and ordering information: support@oirf.com or 1-800-663-8342

The FIT 915 from Medical Electronics

Light: Scientific research results confirm the importance of correct light conditions

Healthy with light

The correct light at the right time; this leads to an outstanding potential of until now unused possibilities in energetic regeneration. Discoveries in the areas of photo-biology and chrono-biology reveal new and easy to use technologies within a wide ranging spectrum with effective application of light in a bio-energetic therapy.

Light: a phenomenon which has occupied human beings since ancient times. It is only now that we understand the enormity of the biological processes which are connected to this energy but which are still not fully understood. Only slowly is natural science recognizing how extremely important the interaction between biological processes in our bodies and the existence of the correct amount of light together with the correct spectrum range at the right time. In nature nearly all biological processes are synchronized by the light-dark phases of the natural sunlight.

White light, an important contributor to our health

Healthy and fit with correct light

Is it possible to be put into a good mood and feel fit by pressing a button? Most probably! Our mood and health are primarily controlled by hormones. These hormones are mainly controlled by light which we absorb with our eyes. This knowledge opens up untold new possibilities to positively influence the body. New technology is making this possible now.

Astonishing results based on the study of light are gaining more and more importance. The natural science branch involved in researching this field is called chronobiology. Practical understanding in this field teaches us about the significance of the correct light at the right time. Important hormones for our health and well being are endorphins, dopamine and serotonin which are controlled by light. Their existence is the immediate reaction to the absorption of natural light or light with equal physical properties. The intensity and the spectrum play an important role. A specially important part of the daylight spectrum is the large proportion of blue light (450-480 nm).

Red light regenerates and repairs holistically

Optimal wave length for holistic regeneration of all eye functions.

Scientific studies confirm that red light with a wave length of 630 nm offers maximum benefits for tissue regeneration. This wave length is also preferably used in photobiology to stimulate holistic body healing effects. Maximum depth penetration and optimal absorption guarantees the best possible treatment results, even in deeper skin tissue. This ensures that the eye itself and all linked supply systems are benefitting from the healing energy of the photons.

The brain needs the information provided by light to be able to cope with numerous tasks

The light absorbed by our eyes is used by the brain for various tasks. Only about 15% of the light which the eyes absorb is used for orientation purposes. The remaining 85% are used in various parts of the brain. Circulation, metabolism, blood pressure, hormones and a whole range of other important functions are directly or indirectly dependent on the light absorbed by the eyes.

Sunlight is variable and continually changes its brightness and color combination

Starting at sunrise and through to sunset the sunlight spectrum arriving on the earth's surface is constantly changing. Since the beginning of time this dynamic light has nurtured all life on this earth. All living organisms have adjusted to this natural biologic rhythm and accepted it as the pacemaker for their inner life rhythm. Accordingly the hormone production is adjusted to the relevant time in the day because of the dynamic of light. Control of the complete hormonal balance can be lost if this dynamic is missing (night work/shift work).

Artificial light sources create biologically unfavorable light

Living areas and work places which are illuminated by artificial light sources induce a raft of problems of the inner synchronization to the outside world. Important wave lengths are missing in this light and it has a permanent unnatural color combination and brightness. The light flickers with toxic frequencies and transfers by plasma discharges of mercury gas corresponding spectral information via the eyes to our brain. Over time this can have disastrous consequences for our health.

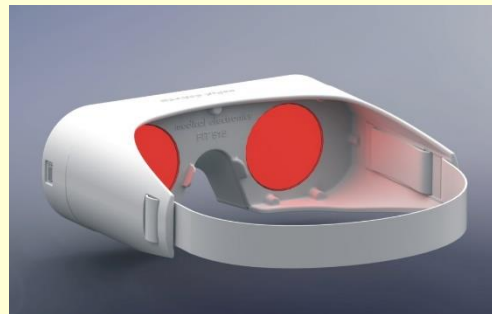
Modern Technology offers a solution

Due to new developments in producing light we now have light sources (LED) with extreme brightness and an ideal spectrum at our disposal. With the modern high intensity LEDs it is now possible to produce light which is utilized by our organism like natural sunlight. The development of the light unit **FIT 915** fulfils all requirements which our organism needs from natural light.

The solution is the **FIT 915**



Intensive white radiation 9,000-14,000 lux wavelength 400-700 nm



Intensive red light radiation 12,000-20,000 mc (12,000-20,000 lux) wavelength 630 nm

Follow this link for a full description of this remarkable [FIT 915](#) device!

Follow this link for full information on the [UBS 315](#) for the revitalization of water.

Contact OIRF offices toll free at 1-800-663-8342 or by email at support@oirf.com for further pricing, order and delivery details.

WEBINARS FROM MED-TRONIK!

Every two (2) weeks, Med-Tronik will be conducting a webinar on various subjects with application and function of the MORA® Nova. Each webinar will be approximately 30 minutes in length and will be in both German and English.

Click here for the German webinars: <http://www.med-tronik.de/academy/webinare.html>

And here for the English webinars: <http://www.med-tronik.de/en/academy/webinars.html>

Simply press the Register button and sign up. You will be sent a confirmation email, as well as a reminder closer to the date.

This is a terrific opportunity for you to receive ongoing education featuring some of the best and most famous instructors from Med-Tronik including **Dr. Nuno Ruivo**, **Dr. Peter Mahr** and even occasionally **Dr. Gottfried Cornelissen**. If the times don't work for you, don't worry, Med-Tronik will be archiving them so you can watch at your own convenience (or time zone).

Depending on time available, there may even be time at the end for a brief Q & A.

We look forward to you taking advantage of this terrific opportunity to get training on a regular basis. More topics will be available as time permits.

Be sure to save this to your "favorites" and join in regularly.



English BioResonance Power Week: MORA® in Daily Practice

The BioResonance Power Week has been devised in order to facilitate our International customers in obtaining their MORA certification. This six-day long English language seminar will cover all standard seminars, Basic, Advanced and Masters.

Price: €400 per person inclusive lunch, scripts, excl. VAT

Duration: 5½ days, Monday-Friday 9 AM to 5 PM, Saturday 8:30 AM to 12 Noon.

Instructors: Dr. Nuno Ruivo and Dr. Peter Mahr

Dates: September 10-15, 2018

To get further details and register go to:

[Register Here](#)

News, Updates, Teasers and Info from Germany Tour #44!

- I'm not going to attempt to fill you in on all the details and goodies that this group of participants was able to glean and collect during this great program. Here are some brief notes and descriptions to grab your attention. More information, pictures and details are beginning to filter into the office and I will be publishing more detailed information on the devices and methods mentioned here when it has all been coordinated.
 - Note that some of the devices are not yet available, or are still being evaluated by OIRF Advisors.
 - Especially with the smaller devices from Medical Electronics you may wish to place pre-orders to be sure you get one as soon as they are available.
 - Please contact support@oirf.com for pricing that reflects today's exchange rates (US or CDN to Euro)

- **Resurrection:** With the closure of so many homeopathic and remedy companies in Europe (Staufen, Heel, Wala . . .), and then their affiliates in North America and Australia, we have simply "lost" access to their amazing legacy of research and efficacy. **But**, a newly formed company called **STAUFEN-BCV** (*Bioenergetic Carrier and "Publisher"*) has utilized all – every single one – of the previous Staufen Pharma homeopathic remedies (including the SDFs and many specialties and potencies) from clean (pre-printing or labeling) amps to electronically record the information into a software program.
 - **Jan/2018:** Purchase of this software is not recommended at this time, but we are watching for availability, corrected pricing and more detailed information
 - This program will apparently work with any standard EAV testing device
 - All remedies are readily accessible and can be electronically "delivered"
 - This is a legacy project for which we can thank **Mr. Norbert Gschweng** who worked with Staufen Pharma for many years.

- **Dieter Jossner of Medical Electronics** has been at it again. What started 2 years ago with the little **UBS 315** for water energization last year developed into the **FIT 915** for photobiological intensive therapy (goggles for the eyes). Well, it's still growing. [*I really love it when Dieter goes on holidays and comes home with all these new and neat ideas!*] This year we are introducing:
 - **UltraCompact Laser Disc** or ULD 117: Okay, remember the UBS 315? Well, this looks exactly the same – except – Dieter has installed four small red laser diodes surrounding the photon generating LEDs to give us deeper penetration. This can be used therapeutically by simply holding the device up to the painful or disturbed area. Hard to hold onto? Okay. Order the **Portable Stand** (ULD Port). Your UBS 315 or ULD 117 will slip into the handheld stand with easy access to the on/off and white/red color buttons. Available now.

- **Tesla Magnet Applicator** or TMA 717: This device is a combination of a special high value Tesla pulse and a multicolor photon radiation system. The Scalar field and the photon source are modulated within the especially effective polyfrequency spectrum (solar noise). The Scalar field is modulated together with the Global Frequency. Available now.
- **Magic Stick** or PAN 717: Miniature therapy device with big variety of effect. This handheld device is equipped with everything you need for quick, easy and effective energetic therapy. The classical infrared laser, combined with vessel relaxing blue Biophotons (stimulation of nitrogen monoxide) as well as simultaneous magnetic field therapy multiplying the positive effects. Available now.
- **Universal Therapy X Laser** or X Laser 517: This device is an optimal combination of a multispectral photon source, eight especially effective laser diodes and a magnetic field pulse. All three base colors (RGB) are individually adjustable in 5% steps. Special charging station also available. A little more expensive, highly effective and available mid-February.
- **“BioPhoton-to-Go”**: This device will be available early in the New Year (maybe February?). A small handheld device for delivering biophoton therapy. After undergoing several recent dental surgeries, I want one of these for sure although I have been using my UBS 315 in the Portable Stand in the meantime.

Quite frankly, I'm amazed at the genius and ingenuity of Mr. Jossner. Every single one of these devices has immediate direct effective application and at a very reasonable price. We have watched the popularity of the UBS 315 and the FIT 915 regularly wipeout the inventory shelves at Medical Electronics. These new devices will also sell “like hot cakes” and for now he has stock available to fulfill all immediate orders. Pictures and more details will follow shortly as they become available to us.

- **Gossip: Dr. Ralf Oettmeier** transferred from **Klinik im Leben** in Greiz, Germany to the Paracelsus Clinic in Lustmühle, Switzerland (Dr. Rau) early in 2017. Recently he has left Paracelsus and will be opening another **new clinic in Switzerland** with his colleague **Dr. Uwe Reuter** (also from Klinik im Leben).



Practice Applications:

MORA® Nova

True BioResonance Therapy with the Patient's own Frequency Spectrum
From Med-Tronik – The Home of MORA® BioResonance

Design meets Technology
For Innovation
In Diagnostics and Therapy

MORA® Nova



State-of-the-Art MORA BioResonance Therapy

MORA® Nova incorporates the original BioResonance Therapy research according to **Dr. Franz Morell** and **Mr. Erich Rasche** with the latest and most up-to-date technology, innovative software and perfection in every detail and design. **MORA® Nova** offers everything you need for easy and effective application in your practice with more than 40 years of experience in the proven MORA BioResonance method plus new design, ease of operation, enhanced therapy options and last but not least, State-of-the-Art technology.

MORA® Nova Features:

| | |
|---|--|
| <ul style="list-style-type: none"> • Easy navigation via 15-inch touch screen with full visual display even in sitting position • Space saving integration of input and output cup electrodes (removable for cleaning) • Space saving integration of foot electrodes • MORA® Mouse function | <ul style="list-style-type: none"> • Indication of active electrodes • Display inclination adjustable • New stylus design with extended functions • Integration into an existing network / Central control by an administrative PC • Graphic images of measuring point as well as the respective organ • Graphic menu navigation |
|---|--|

Technical Data:

| | |
|---|---|
| <ul style="list-style-type: none"> • 2 channel technology • 2 Interfaces (Mode A + Abar – inverted A) • Scott-Morley for 2 channels and significant technical improvement • Frequency range: 0.1 Hz to 1 MHz • Filter adjustment range: 1Hz to approx. 900 kHz • Amplification 0.1 to 1 Million per channel and mode • Modular design (channels, interface, etc.) • Integrated PC • Laser electrodes (Optional) • Electronic remedy software (Optional) | <ul style="list-style-type: none"> • Programs with up to 16 single steps • Selective automatic 4 or 6 segment measurement • Automatic detection Hypo/Hyper • Extension of standard fixed programs • Therapy recommendation from the EAP-measurement • Therapy cycles freely adjustable 1 – 65,000 • Pulse/Pause adjustable 0.1 – 100 sec. • Integrated MORA®-Mouse, cup electrodes • Graphic display of measuring points • Square-wave generator 1 Hz to 500 kHz • Sine-wave generator 1 Hz to approx. 250 kHz |
|---|---|



European MORA® Nova Features:

| | |
|---|--|
| <ul style="list-style-type: none"> • Allergies – diagnosis and treatment • Indication oriented standard programs w/o EAP test • Global Scaling Basic therapies • Psychosomatic programs acc. to Nienhaus • Color therapy acc. to Gruba | <ul style="list-style-type: none"> • Color therapy (e.g. mirrored nature images during the therapy session) • Music therapy (Psychophonia) via headphones • Addiction therapy, drugs, alcohol, etc. • Individual software for faculties • And much, much more . . . |
|---|--|

List of Electronic Test Sets for Therapy with MORA Nova

| Individual Test Sets – All test sets together comprise approximately 20,000 single substances | Test Set Group – Contains single test sets selected for the user at special pricing conditions |
|--|--|
| <ul style="list-style-type: none"> • 5-Elements • Allergy • Alzheimers & Dementia (Cornelissen) • Bach flowers • Biological catalysts • Chemical elements • Dental • Geopathy • Labo Life • Meridian test set (Morell) • Mycosis • Nosodes • Orthica – Orthomolecular substances • Sanum • Schüssler Salts • System test set (Cornelissen) • Heel • Wala | <p>NOVA-Elements Group</p> <ul style="list-style-type: none"> • 5-Elements • Allergy • Bach flowers • Chemical elements • Geopathy • Mycosis • Nosodes • Schüssler Salts • Horvi • Meridian test set <p>Individual Test Sets (Continued):</p> <ul style="list-style-type: none"> • Horvi – snake serum and enzymes • Pascoe – homeopathic substances • Pekana • Vitortho – Orthomolecular substances • Inus – Orthomolecular substances • Color test set |

Some European Practice Applications (Mora Therapy):

- Allergies and Food Intolerances (Europe and Canada)
- Geopathic stresses
- Functional Circulatory disorders
- Acute and chronic pain and inflammatory conditions
- Metabolic disorders
- Building immune system.
- Delivery of medication information.
- MORA BioResonance Therapy will always increase speed and efficacy of complementary therapies.
- Can also be complemented by:
 - BioPhoton Therapy – especially for skin rashes and other skin disorders
- Follow this link for [MORA BioResonance details](#).
- For order, delivery & pricing information contact OIRF Office at 1-800-663-8342

Carolyn's Comments: In recent years we have watched some of our top rank Naturopaths going back to the books to prepare for the dreaded “prescribing exam”. Personally I wonder about why our NDs are being trained and examined to prescribe (allopathic) medications when as Naturopaths they would normally “prescribe” homeopathics, supplements, herbs, etc. On the other side of the coin we are seeing our homeopathics and natural remedies being taken off the market by Health Canada and the US FDA. Where can we now turn for remedies for our patients? Note that Sanum, Heel and other North American “discontinued” remedy companies are definitely licensed and included in the software above . . .

OIRF Special Reports:

- 1) **Report on LM Potencies** (Homeopathy). Translated and prepared by **Dr. Walter D. Sturm** based on the work of **Dr. Samuel Hahnemann**. This is pivotal information for all homeopaths. In the last years of his life Dr. Hahnemann turned solely to the use of LM potencies for his patients instead of the "usual" C and X potencies still utilized today. This knowledge was suppressed for nearly 80 years and revolutionized the practice of homeopathy when that famous 6th edition of his Organon of Medicine was finally published. Read the story and see the meticulous research and translation left us by Dr. Sturm. See further information on this important report at this link. 51 Pages. \$40
- 2) Collection of **Three Reports by Dr. Gottfried Cornelissen** (BioResonance). 1) A Critical Examination of Current EAV Diagnosis (individual report below); 2) Increasing Efficiency of Allergy Cancellation Therapy by Application of Substance Specific Frequency Ranges; and, 3) The Problem of A and Inverted A in Homeopathic Nosodes (individual report below). 31 Pages. \$20
- 3) **The Problem of A and Inverted A in Homeopathic Nosodes** (BioResonance). Translated and prepared by **Dr. Walter D. Sturm** based on the research of **Gottfried Cornelissen, DMD**. Advanced BioResonance information. 4 Pages. \$5
- 4) **A Critical Examination of Current EAV-Diagnosis, the Mebe-Ampule and Filter Procedure** (EAV & BioResonance). Translated and prepared by **Dr. Walter D. Sturm** based on the research of **Gottfried Cornelissen, DMD**. Digital single point measurement according to Dr. Cornelissen. Advanced BioResonance and EAV-Diagnostic information. 14 Pages. \$10
- 5) **Transliterations of the Chinese Acupuncture Point Names with Explanations**. This is a supplement to the Modern & Traditional Acupuncture Program. Every single traditional acupuncture point is shown with the point name transliteration (with both new and old – Pinyin and Wade Giles – spellings) along with a full explanation. Translated by **Michael C. Barnett, DACu, LAc** from the work and research of **Jean-Claude Darras, MD**. 35 Pages (free to all M&TA program subscribers)
- 6) **The Genital System**. Translated by Carolyn L. Winsor; revised and edited by **Sean Christian Marshall, DSc** based on the work and research of **Jean-Claude Darras, MD**. Advanced traditional acupuncture information explaining the energetics of the genital system including disorders and treatment. 23 Pages. \$25
- 7) **A transcript of Dr. Morell's BioElectronic Vincent Lecture (BEV/BE-T-A)**. **THIS OFFICIAL TRANSCRIPT** of Dr. Franz Morell's 3-hour lecture is available from the Institute. It consists of thirty-one pages plus reproductions of his slides – it gives an excellent introduction to this objective bio-electronic testing method (BEV). Dr. Morell took us even further into the BIO-ELECTRONIC "VINCENT" Method during a subsequent seminar and introduced a totally new [at that time] German built instrument for it (by the Med-Tronik company, and Mr. Erich Rasche again!) to this country. \$15
- 8) See the OIRF [Archives Page](#) for past issues of "The Bridge" newsletter.

And don't forget to order your copy of:

The OIRF Special Report on Medication Testing

A translation of Dr. Kramer's full medication testing guidelines from beginning to highly advanced aspects. Dr. Kramer has given us the most complete, step-by-step guidelines for learning medication testing on your own. Based on his seventeen years of practice and teaching, he also suggests the preparations you need to get started. Recommendations on how to order a set of those preparations for yourself are included within the report, and most are now included within the Electronic Remedy Test Sets Software. If you follow all of the report instructions, you will learn how to do medication testing by yourself, easily, quickly and correctly. If not, something is wrong with your Electro-Acupuncture instrument – not you!

This SPECIAL REPORT available in electronic or printed format for \$30.00
(Report is over fifty pages. Preparations are not included.)

OIRF Video Training Programs:

- 1) Diagnostics & Therapeutics Seminars by Dr. Walter Sturm[†]** (full set). Older seminar workshop where Dr. Sturm covered Diagnostic approaches (EAV, point and medication testing) and BioResonance Therapy approaches (MORA, Electronic Homeopathy and Remedy Information transfer). Five DVDs plus 1 disc with all overheads and handout materials. \$200
- 2) Biological Medicine Symposium 2012** (full set). Keynote speaker was Prof. Dr. Roeland van Wijk (colleague of Prof. Dr. Fritz-Albert Popp) specialist in BioPhoton light therapy, biophysical chemistry and molecular biology. 10 other well known complementary medicine practitioners, dentists and researchers. 12 DVDs plus Symposium Manual. \$100
- 3) How to Use the MORA III.** Dr. Walter Sturm[†] teaches how to use the MORA III unit for therapy and reviews the use of the RM200 diagnostic option. #35
- 4) Introduction to the MORA Super Plus and ELH.** Dr. Brian MacCoy[†] teaches how to hook everything up, how to get started, how to get set up with all the "goodies" that come with the device. \$35
- 5) How to Start Treating Patients with the MORA Super Plus.** Dr. Brian MacCoy[†] covers use of the Therapy Hand Book (applicable to all models of the MORA) as well as the basic electronic homeopathy applications. Here's how to set the device with the pre-set therapy programs. Get a good understanding of the scope and capability of these dynamic healing devices.
- 6) MORA Nova Training Seminar.** Dr. Nuno Ruivo (Med-Tronik). How to take the unit out of its shipping box and set it up. 3-part overview of BioResonance and patient simulations with emphasis on practical application in your practice. \$100
- 7) MORA BioResonance Therapeutic Possibilities.** Marguerite Lane, ND. How to get the best out of your MORA, how it works, and the basic concepts of classical BioResonance. Expert guidance on how to tackle the most common underlying problems in health. \$190
- 8) See ongoing training in Webinar format from Med-Tronik.**

A Special Report

The Ground Regulation System (GRS)

By o. Univ.Prof. Dr.rer.nat. med.habil. Hartmut Heine †

A few years after his serious illness in 2011 **Prof. Dr. Hartmut Heine** published a series of seven articles on the **Ground Regulation System**. I [*Carolyn Winsor*] was honored to be able to translate this incredible research into English for the first time and to publish it in our newsletter, "The Bridge".

As I worked my way through translation of the first article, the wealth of knowledge and understanding imparted in even that introductory article left me scrambling for dictionaries, research documents hidden away in the old OIRF library and way beyond "Google searches" to make sure that I was doing justice to the information Prof. Dr. Heine was imparting. Combined with the succeeding six further articles, his gift to us of knowledge and of understanding is truly priceless.



In respect for Prof. Heine I have merged those seven articles into one single report and have republished it separate from that older newsletter. With a total of 48 (mind-blowing) pages, this work is not just "worthwhile" reading, but mandatory reading for all practitioners of orthodox and complementary medicine. Available in electronic or print format for \$30, here is an outline of the contents:

- Part 1** – The Ground Regulation [A History and Background]
- Part 2** – GRS as a non-linear system – Structure, function and determined chaos
- Part 3** – GRS as a non-linear system– Structural components of the extracellular matrix (ECM)
- Part 4** – Spatial structure of the ECM and material transport within the system
- Part 5** – Contact, limitation and clogging up: Cell adhesion, basal membrane and glycosylation
- Part 6** – Functional relations of the ground regulation with the central nervous system
- Part 7** – The Ground Regulation and the Circadian Rhythm
 - The Ground Regulation and Alzheimer Dementia



➤ **OIRF Resource Materials:**

- For more information and instruction about point and medication testing with EAV see the OIRF: [Medication Testing Report](#) and the [EAV Desk Reference Manuals](#) (both available on disc).
- For more information and instruction about [Diagnostic and Therapeutic Techniques in Biological Medicine](#) with emphasis on BioResonance Therapy be sure to order the recently re-released videos of Dr. Walter Sturm's seminars.
- For a complete [listing of OIRF resource materials](#), including publications, reports, books and videos please follow this link to our website. There are full descriptions of all printed and recorded materials online.
- For a complete [listing of OIRF recommended instrumentation](#), including diagnostic, therapeutic and BioResonance devices please follow this link to our website. There are full descriptions of all instrumentation online.
- Of the three full "home-study" or "extension training" programs developed by Occidental Institute, two have been fully updated and are available in PDF format on disc. Research and publication of each of those programs has been pivotal in the development and application of Acupuncture and Biological Medicine in North America and around the world. Be sure to obtain your copies of these famous and well respected volumes for your library and study purposes.
 - Modern & Traditional Acupuncture: \$165
 - Master of Acupuncture Program: Translations of the ancient acupuncture classics (The Nei Ching consisting of the Su Wen and Ling Shu, as well as the "Difficult Classic" the Nan Ching) are still available in printed format – \$125
 - EAV Desk Reference Manuals, Parts 1 & 2 – \$200
 - Diagnostics and Therapeutics Seminars of Dr. Sturm – \$200

Get more details at <http://www.oirf.com/resources.html>

"EXTENSION TRAINING" PROGRAM IN MODERN & TRADITIONAL ACUPUNCTURE

Over twelve hundred pages of printed materials incorporating applicable materials from the supplementary textbook ([An Outline of Chinese Acupuncture](#)) and set of four charts (by [China Cultural Corp.](#)). Program starts off assuming you know nothing about acupuncture (a good place to start even if only as a thorough review of the basics) and takes you right through to the most heavy-duty advanced aspects of true, 'energetical' acupuncture. The finest and most comprehensive material in the English language, covers all seventy-one meridians of traditional acupuncture; that 'missing sixty percent' of acupuncture knowledge most "acupuncturists" have never even heard of; and, the modern electronic 'needle-less' treatment methods (Electro-Acupoint Therapy) now so popular.


Over 3,000 students were originally enrolled in this famous Extension Training Program, and the OICS graduate listings read like a "Who's Who of Acupuncture" in the English speaking world. This program takes you as far as anyone possibly can in a 'written' format prior to the clinical finesse and practicum needed to round out your acupuncture study to professional levels.

FULL THIRTY-THREE LESSON PROGRAM NOW AVAILABLE ON DVD

Price includes disc with all 33 Lessons, applicable supplementary textbook ([An Outline of Chinese Acupuncture](#)) passages and representation of set of acupuncture charts (China Cultural Corporation set of four). [Current editions of the textbook and charts can be easily obtained from suppliers of acupuncture books and supplies.] Price does **not** include printed materials, binders; or, any tutorial, examination, or certification privileges. Follow above link for full details. **Full set on one disc available for CDN \$165.**

2018 Calendar of Events!

| Event | Lecturers | Dates | Details/Contact |
|--|--|--|---|
| Concordia | Dr. Robert Cass and others TBA | Tucson, Arizona March 9-10, 2018 | Concordia Conference sponsored by AOIBS |
| Theragem Basic Training | Catharina Jansma | TBA | For registration information contact: Website: medicahealth.org/ |
| Neural Therapy & Integrative Biological Medicine | Dr. Michael Gurevich Dr. Ralf Oettmeier Dr. Joseph Vizkelety | Jamaica, NY March 16-18, 2018 | Contact: 516-674-9489 or Email: gurevichmd@gmail.com |
| Acupuncture Meridian Assessment St. Louis, MO | Dr. Simon Yu Dr. Doug Cook Carolyn Winsor | St. Louis, MO April 27-29, 2018 Aug. 24-26, 2018 | Prevention And Healing For medical/health practitioners inc'g MD, DO, DDS, DMD, DC, ND, RN |
| Med-Tronik Power Week and Individual Seminars | Dr. Nuno Ruivo Dr. Peter Mahr | Sept. 10-15, 2018 Friesenheim, Germany | Contact Med-Tronik to register |
| Neural Therapy Workshops | Dr. David Vinyes Dr. Teresa Garcia Caballero | Glen Head, NY Oct. 5-7, 2018 | Contact: 516-674-9489 or Email: gurevichmd@gmail.com |
| 52nd Medicine Week Congress, Baden-Baden, Germany | Lectures primarily in German language - participants of Tour #45 will attend | Baden-Baden, Germany Oct. 31-Nov. 4, 2018 | Contact OIRF for registration and participation details |
| Biological Medicine Tour #45 to Germany | TBA | Starts in Frankfurt, Germany, Oct. 30 to Nov. 5, 2018 | For further details and registration information please contact: http://www.oirf.com/ Make this the year you participate!! |
| Throughout 2018 OIRF will participate in numerous conferences and seminars with exhibit and education booths. | | | Watch your newsletter and the Events Page on this website as details are announced. |

 **Conferences and Conventions:** As an ongoing approach to bring this information and education to a broader range of practitioners, OIRF will sponsor speakers and lecturers in a number of conferences and events throughout the USA, Canada and Germany.

Plans and registrations for OIRF to be present at a number of important international conferences have been arranged, and we are looking forward to the many activities of this exciting and busy year. It is our hope that you will join us in our efforts to expand the use and knowledge of Biological Medicine in Canada, the USA and around the English-speaking world.

Here are **some** of the events where our OIRF Board of Directors and Advisors are giving presentations and participating. Be sure to check out the announcements of events and conferences enclosed and on the [Calendar of Events](#) on our website. Make plans **today** for which events you will attend during exciting and busy 2018 year. Your support for the organizers is greatly appreciated, and gives you the benefit of fascinating, informative and educational programs that will enhance your practice – and CEU's! OIRF directors, advisors and/or members are active in each of the recommended events. See also Pages 2, 10, 22 and 23(PDF) for further details.

➤ **The Tenth International Alternative Medical Conference** sponsored by **Dr. Simon Yu's Gateway Foundation for Biological and Integrative Medicine** will feature multiple excellent speakers. ~~Dates Sept. 28-30 and Oct. 1, 2017 in St. Louis, Missouri.~~ See www.iamconf.com/ for full details. **Did you miss this exceptional conference ? ? ?** Professional video recordings are available at quality@aurorarecording.com.

➤ **AMA (EAV)** hands-on workshop for MD's during April 27-29 and August 24-26, 2018 sponsored by **Dr. Simon Yu** of **Prevention and Healing** in St. Louis, Missouri.

Note: This AMA training and boot camp session has recently been opened to practitioners with alternate certification. It focuses on EAV-type testing for parasites and dental problems.

➤ **Neural Therapy and Integrative Biological Medicine:** Sponsored and organized by **Michael I. Gurevich, MD**. Program includes: Advanced Neural Therapy, New injection techniques, Holistic Biological Dentistry, Introduction to vital blood analysis and the Basics of European Phytotherapy. Features **Ralf Oettmeier, MD and Joseph Vizkelety, MD, DDS**. Jamaica, New York March 16-18, 2018. Also **Neural Therapy Workshops:** Oct. 5-7, 2018 Glen Head, New York. Call 516-674-9489 or email gurevichmd@gmail.com for further details and registration!

➤ **English MORA Power Week training** at Med-Tronik in Friesenheim, Germany, September 10-15, 2018. Contact OIRF or Med-Tronik for registration and details.

➤ **52nd Medicine Week Congress.** Dates are **Oct. 31 through Nov. 4, 2018** in Baden-Baden, Germany with OIRF Advisors, Directors and Germany Tour participants attending. Usually more than 3,000 doctors participate with nearly 200 lectures, workshops and courses (German and English language). Exhibit area with more than 220 exhibits provides you with an excellent insight into the big product offerings in natural healing and complementary medicine. There you can find out directly, and compare. Contact OIRF for attendance possibilities.

➤ **Biological Medicine Tour #45 to Germany, October 30 through November 5, 2018.** Join us for our **45th** group tour including the world famous "Medicine Week" Congress in Baden-Baden. Tour program also includes exclusive OIRF English language lectures from renowned German clinicians and researchers as well as pharmacy and clinic visits. Speaker, event, itinerary and registration details will be posted on our website.

To tempt you for the 2018 tour program follow this link to our [report on our 2016 program](#) and activities. Watch this [Germany Tour](#) link to see the scheduled plans and speakers for 2018 as they are arranged and finalized. We highly recommend that you register early as **attendance is once again being strictly limited**.

➡ Follow this link to our website to see Volume 14, Issue #2 in PDF print format.

➡ **Updates, Reminders and Announcements:**

➤ Watch for seminar and conference updates. Plan early which events you will be attending this year.

➤ Watch for Volume 14, Issues #3 of the "The Bridge" newsletter to arrive in your Inbox in mid-March 2018. There are a number of new and exceptionally well written articles by Med-Tronik researchers and instructors that have been published in the German *CO'Med* and *Naturheilkunde* journals. Carolyn is busily translating as many of them as possible for future newsletter issues. Watch for news of new devices and interesting information gleaned during our Germany Tour travels.

➤ Visit our **Facebook** page – will you be our friend?



I trust you have found much of interest in these pages. During the 2018 winter and spring seasons we are looking forward to participating in numerous conferences while supporting various speakers and several complementary organizations. Additionally, there are a variety of informational articles being prepared for the next Issues of Volume 14 of "The Bridge". Electronic publication with access open to all will continue throughout 2018 and we will continue bringing you that cutting-edge information for which OIRF is famous.

We look forward to meeting you during our forthcoming 2018 activities and programs. As always, your comments are welcome. Remember that this is your newsletter. Your suggestions, article contributions, critiques, FAQ's and compliments are gratefully accepted.

Yours in health,

Carolyn

Carolyn L. Winsor
Managing Director
Phone: (250) 490-3318
support@oirf.com

To Unsubscribe send an email to support@oirf.com with "unsubscribe" in the Subject Line.

Published by Occidental Institute Research Foundation
P. O. Box 100, Penticton, BC V2A 6J9 Canada
Telephone: (250) 490-3318 Fax: (250) 490-3348
Website: www.oirf.com Email: support@oirf.com